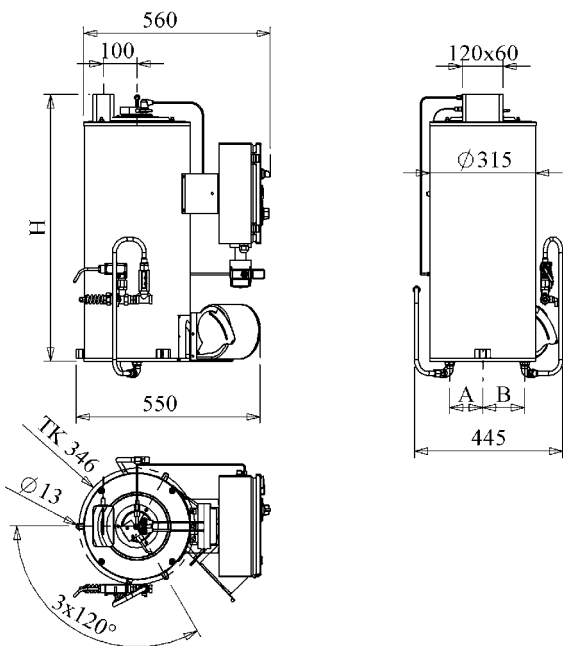


Technical data Type BR...12V, oil heated.

Type	Heating coil	[bar]	BR750 12V	BR900 12V	BR1000 12V
Contents, Heating coil	3/8"	300	2,92 Ltr.	3,55 Ltr.	4,17 Ltr.
		500	2,56 Ltr.	3,10 Ltr.	3,66 Ltr.
		*700	1,14 Ltr.	1,38 Ltr.	1,62 Ltr.
Allowed operating pressure. [bar]	3/8"	200	6,17 Ltr.	6,89 Ltr.	7,60 Ltr.
		300	300	300	300
		500	500	500	500
Allowed operating temperature [°C]	1/2"	200	200	200	200
		300	300	300	300
		*700	*700	*700	*700
Dimensions Length x width x height [mm]*			See dimensioned drawing below!		
Weight [kg] **	3/8"	300	58,0	64,0	68,0
		500	62,5	69,2	74,0
		*700	74,5	85,10	91,6
Tube length of the heating coil [m]	1/2"	200	56,2	58,5	62,9
	3/8"		28	36	40
Tube- Ø of the heating coil [mm]	3/8"	300	17,2	17,2	17,2
		500	18,0	18,0	18,0
		*700	18,0	18,0	18,0
Operating voltage [V]	1/2"	200	21,4	21,4	21,4
		300	12 V DC	12 V DC	12 D AC
Total current consumption [A]			25	25	25
Nozzle [G/h]			1,5	1,75	1,75
Oil flow [kg/h]			5,10 - 6,24	5,61 - 7,42	5,95 - 7,87
Effective range of capacity [kW] (± 15 %)			50 - 60	60 - 70	60 - 80
Degree of efficiency of combustion [%]			>= 90	>= 90	>= 90
Max. exhaust gas temperature [°c]			200	190	180
Flue gas loss [%]			<= 10	<= 10	<= 10
Soot value according to Bacherach			0 - 1	0 - 1	0 - 1

* **700 Bar-combustion chambers will be supplied without control system and safety device. The customer is responsible for the safe operation of the machine.**

** **The mentioned weights are without control system and safety device.
Weight of safety device and control system: 9,6 kg.**



Dimensioned drawing

	A		B		H
	3/8"	1/2"	3/8"	1/2"	
BR750 12V	126	132	99	101	625
BR900 12V	126	132	99	101	710
BR1000 12V	126	132	99	101	810